



INTERNATIONAL
HELLENIC
UNIVERSITY

University Center of
International Programmes
of Studies (UCIPS)

OpenVPN configuration guide

Dept of Digital Governance
University Center of International Programmes of Studies
International Hellenic University

1. Overview

The VPN service provides secure remote access to the International Hellenic University (IHU) network. It can be used from any location worldwide, provided you have an active Internet connection. Once the VPN connection is established, you will be able to access academic resources – otherwise available only within the university campus – such as electronic journals and library services.

Prerequisites

- Your IHU institutional account (**Uregister**) should be activated.
- The **OpenVPN Connect** client software should be downloaded and installed.
- Your IHU VPN configuration profile should be also downloaded and installed.

2. OpenVPN Connect Installation and Setup

- a. Access the IHU UCIPS VPN page:

<https://www.ihu.gr/en/it-thermi#vpn>

- b. Click on the **OpenVPN Client** button

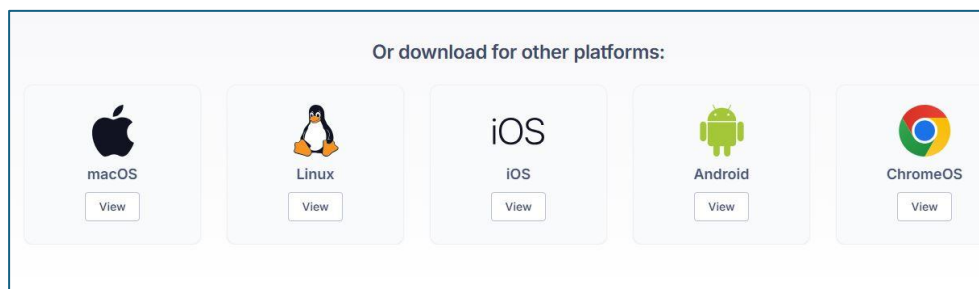


- c. At the next page, download the **OpenVPN Connect** version that is compatible with your operating system (Windows, macOS, Linux, iOS Android)

Click on **Download.msi** for Windows:



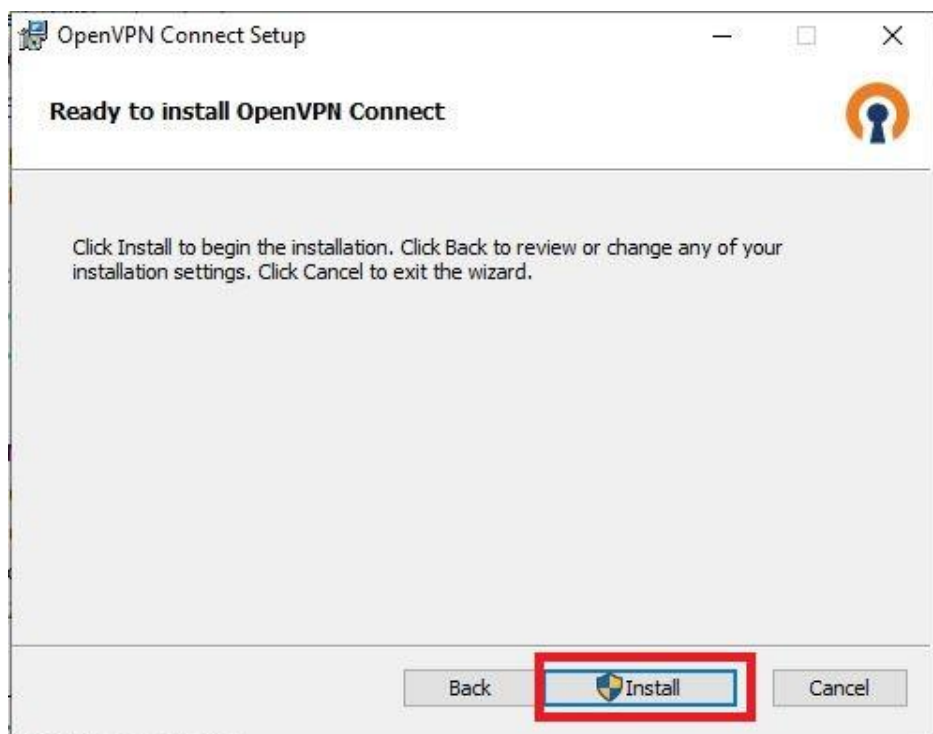
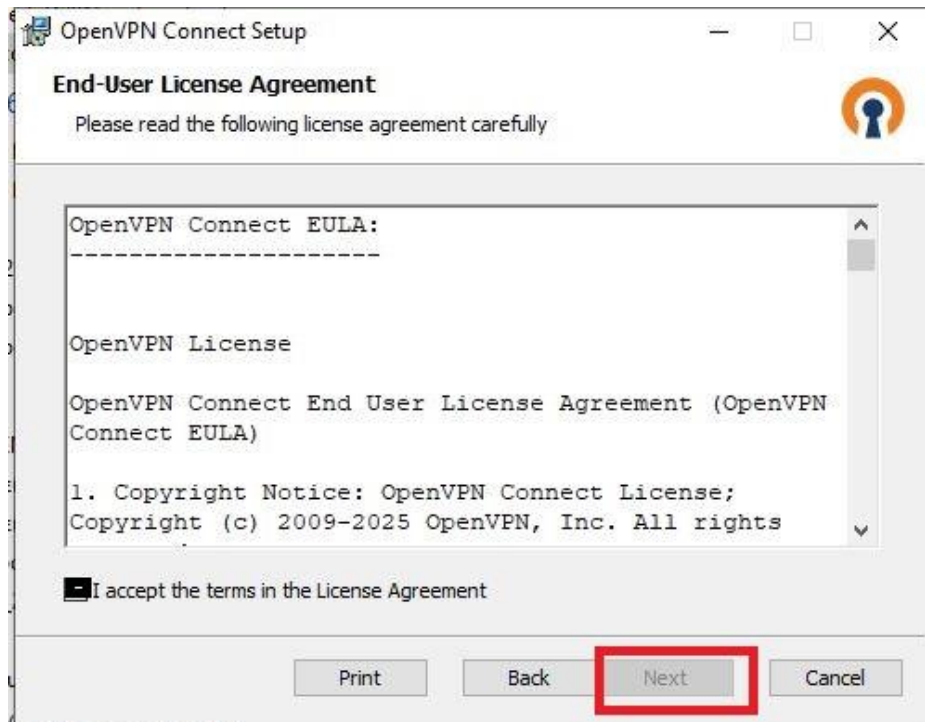
Or, alternatively, select a different OS to download and install the proper version of the client



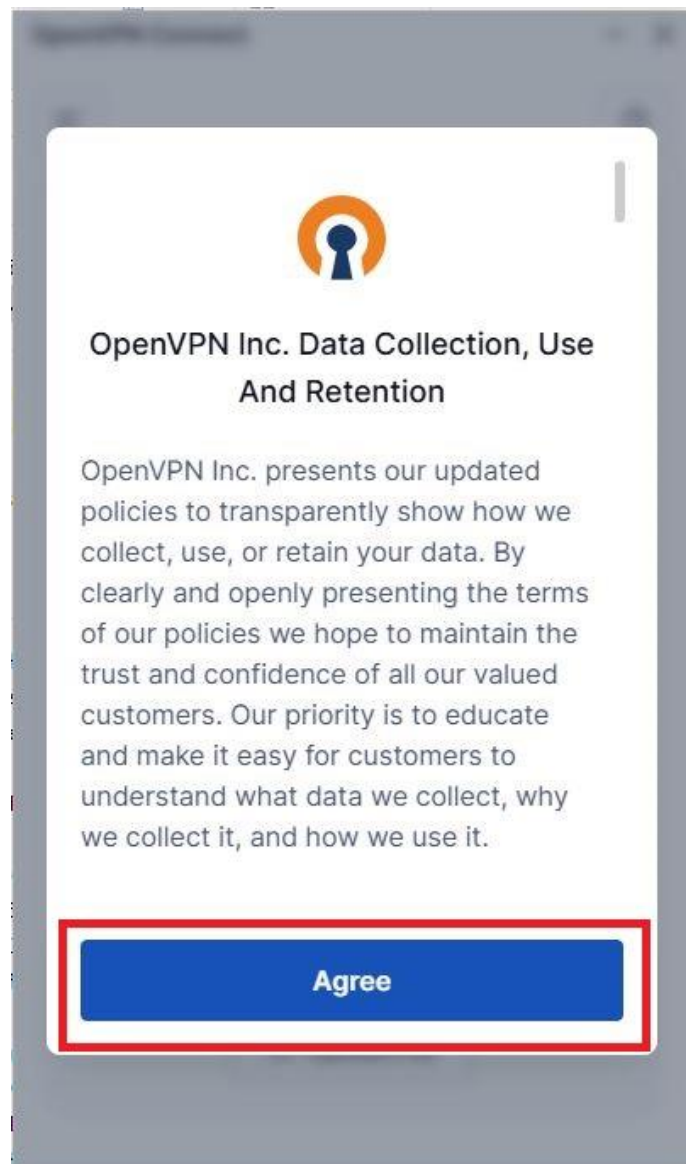
- d. **For Windows:** Double click on the downloaded msi file and follow the steps of the setup wizard.



Click on the ***I accept the terms in the License Agreement*** checkbox and then on ***Next***. Then, click on ***Install***



- e. After the installation is completed, the application will be launched. Read the terms of use and click on **Agree**



3. OpenVPN profile installation

- a. Access the IHU UCIPS VPN page again:

<https://www.ihu.gr/en/it-thermi#vpn>

- b. Click on **OpenVPN profile**



- c. The following popup window will show up. Click on **Open OpenVPN Connect**



- d. **Confirm** the profile import from `uvpn.ihu.gr`

Confirm importing the profile from ×

uvpn.ihu.gr

Confirm

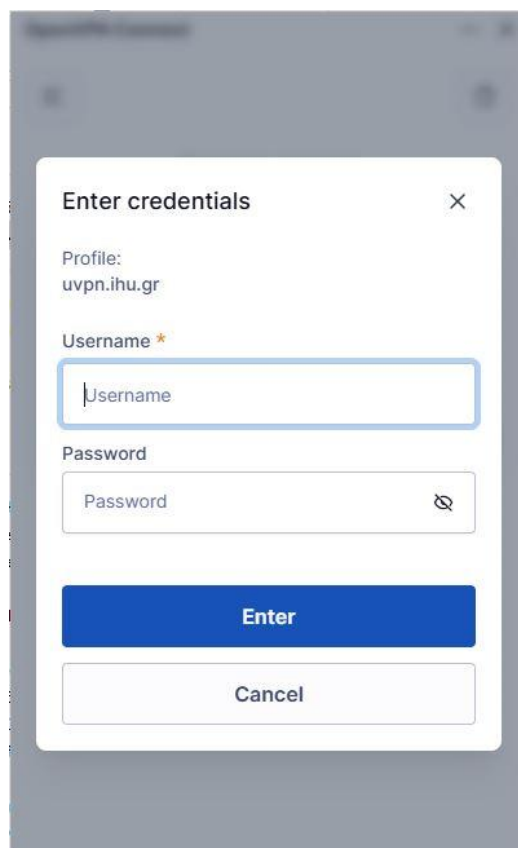
Cancel

4. Connect to the VPN with OpenVPN Connect

To connect to the VPN for the first time, launch OpenVPN Connect (if not already launched) and click on **Connect**.



Fill in the **Username** and **Password** of your **Uregister** account. Then click on **Enter**.



It will take a few seconds to connect to the VPN. If the connection is successful, the following screen will show up.



Important note: Stay connected to the VPN only for accessing academic resources that are only available within the IHU premises, such as **Library databases** (<https://www.ihu.gr/ucipslib/databases/>). After finishing your work, please do not forget to **Disconnect**. VPN connection is **not required** for accessing services such as the e-learning platform, email etc.