



INTERNATIONAL
HELLENIC
UNIVERSITY

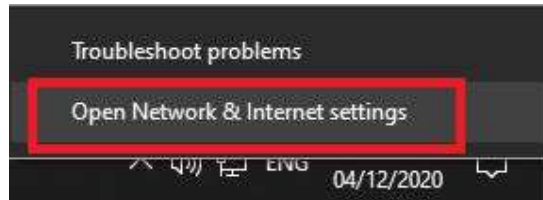
University Center of
International Programmes
of Studies (UCIPS)

VPN Configuration Instructions Windows 10

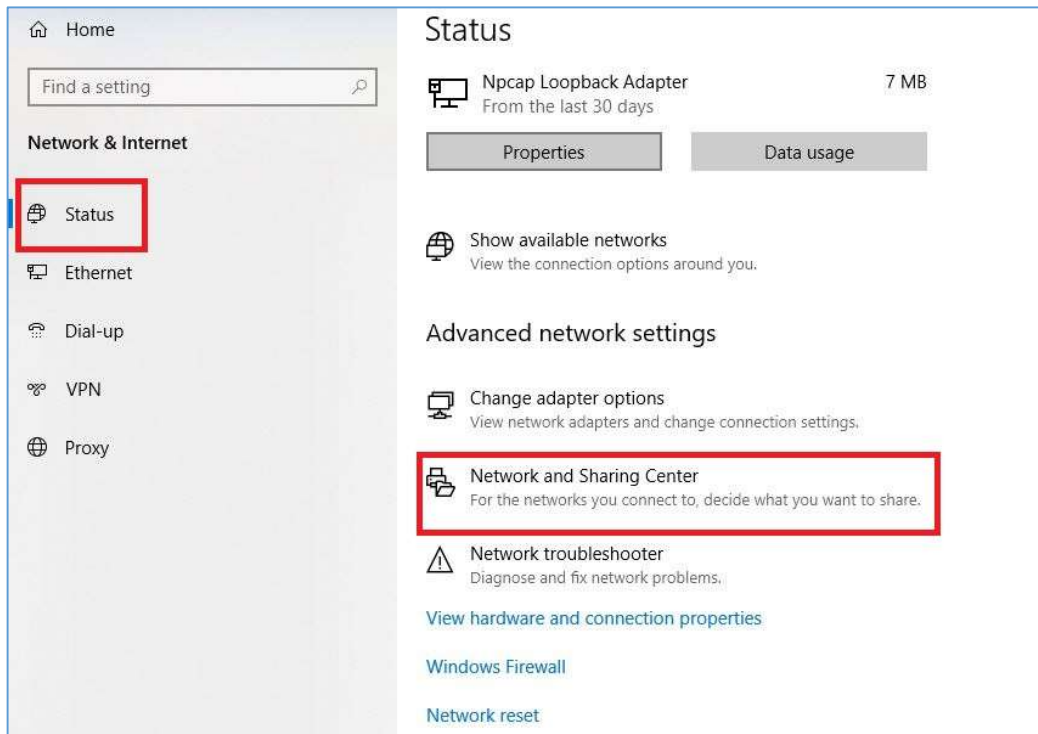
Dept. of Information &
Telecommunication Systems & Services, IHU

VPN Setup

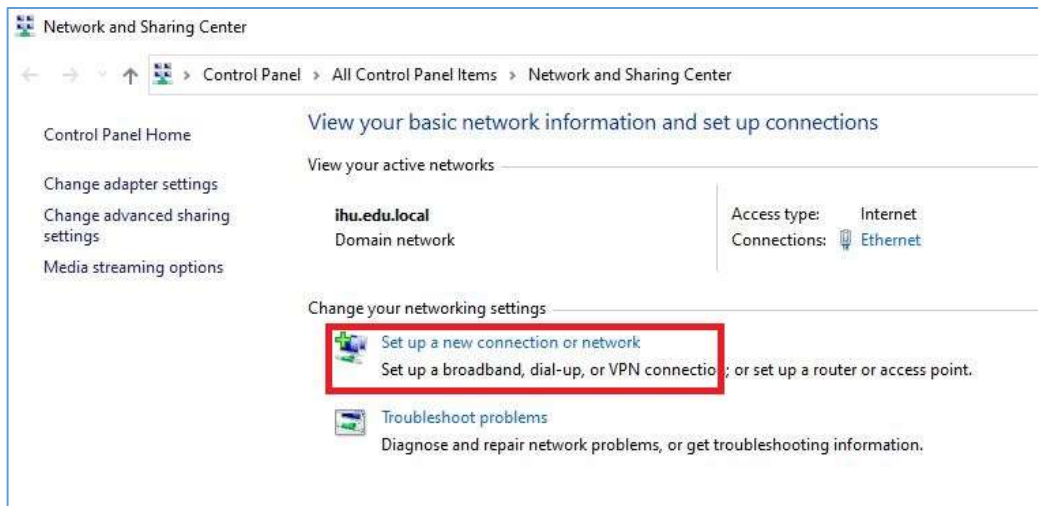
1. Right-click on your network icon at the bottom right of your screen (taskbar). Click on **Open Network & Internet settings**.



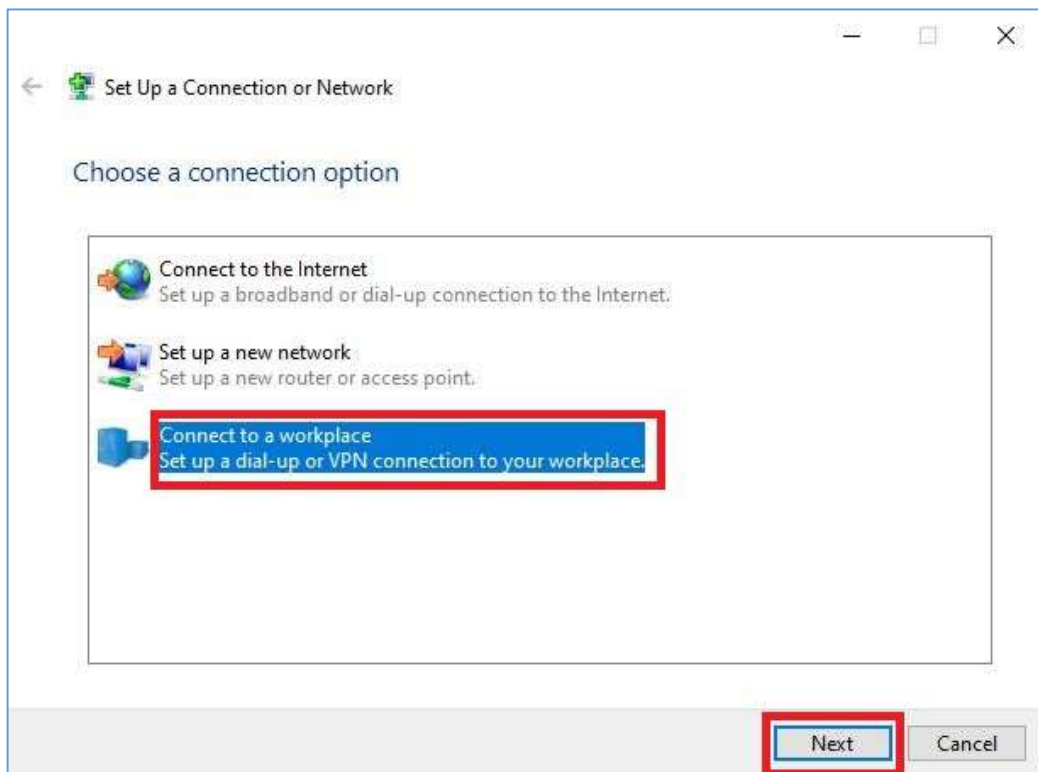
2. In the new window, select the **Status** page. Then click on **Network and Sharing Center**.



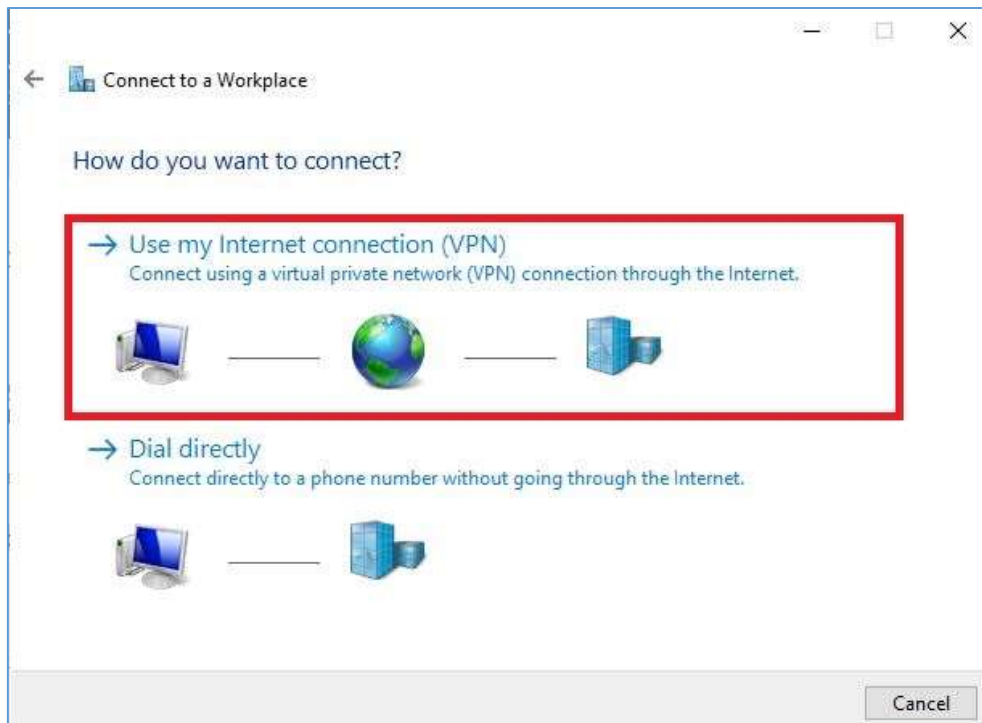
3. Click on ***Set Up a Connection or Network***



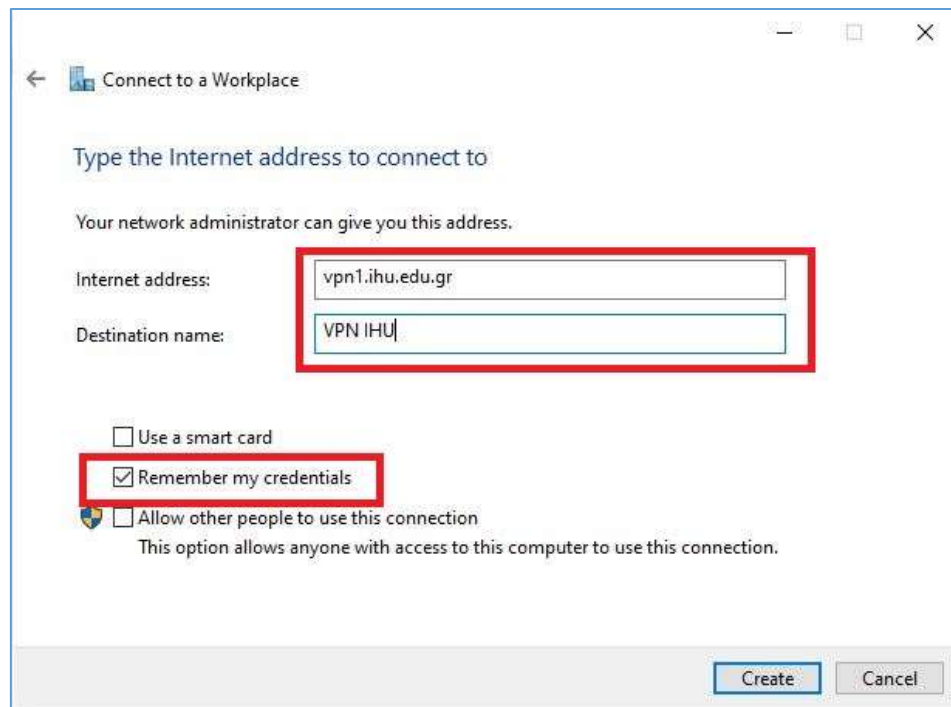
4. Select ***Connect to a workplace*** and click ***Next***.



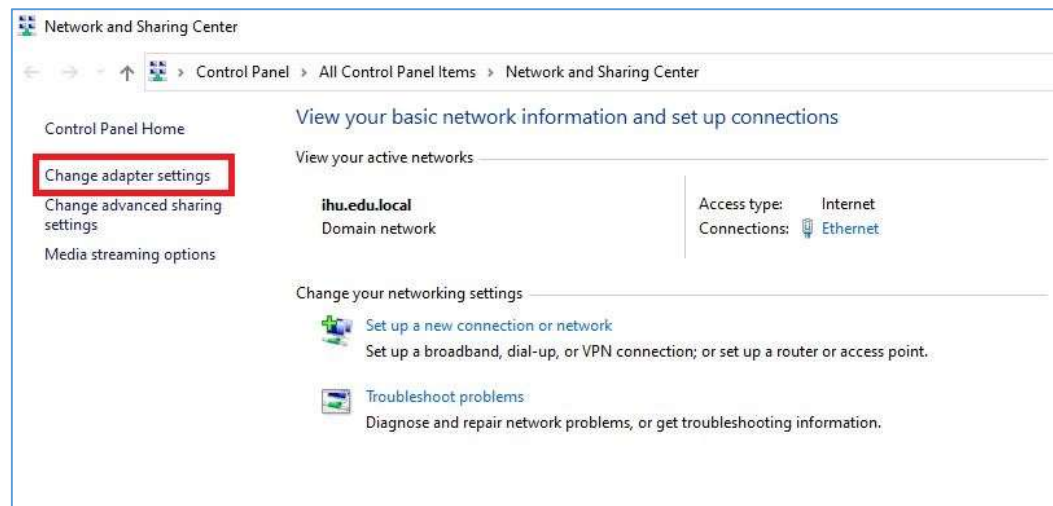
5. Select ***Use my Internet Connection (VPN)***



6. In the ***Internet Address*** field, type ***vpn1.ihu.edu.gr***. In ***Destination Name***, type a descriptive name: e.g. ***VPN IHU***. Check the ***Remember my credentials*** checkbox. Click on ***Create***.



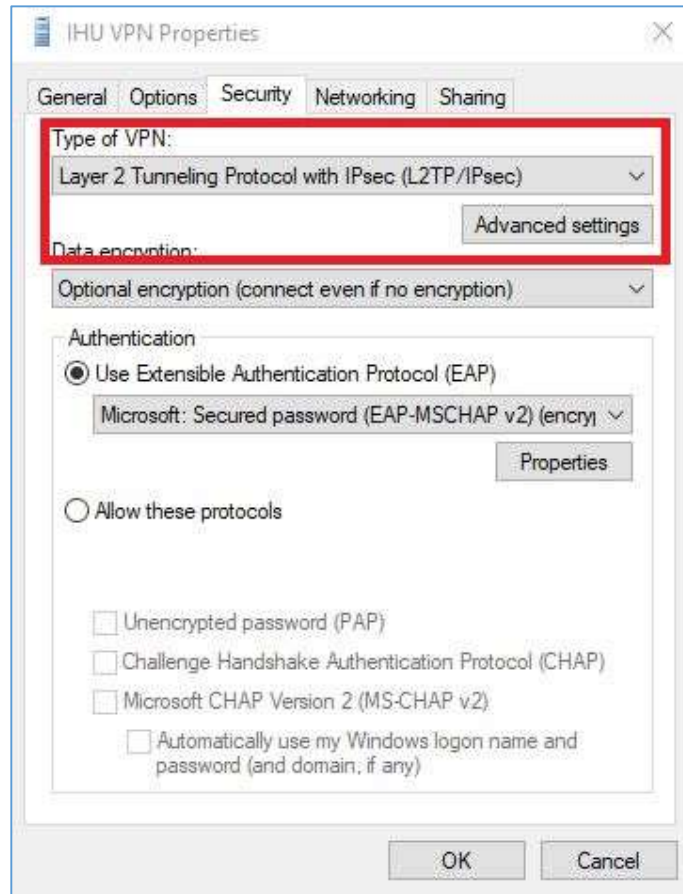
7. From the **Network and Sharing Center** window, click on **Change adapter settings**.



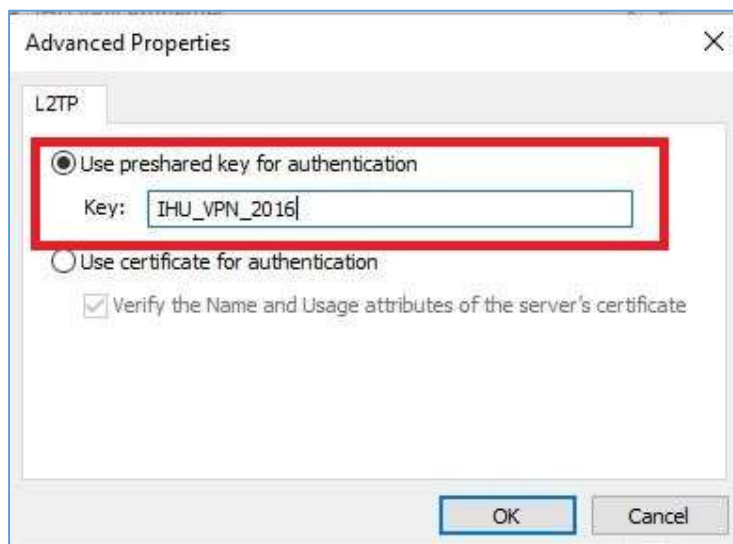
8. Right click on the **IHU VPN** icon and click **Properties**.



9. At the **Properties** window, select **Security** tab. From the **Type of VPN** drop-down menu, choose **Layer 2 Tunneling Protocol with IPSec (L2TP/IPSec)**. Then click on **Advanced Settings**.

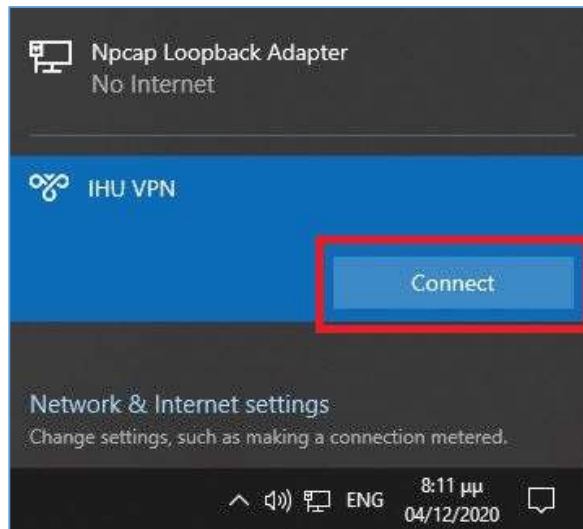


10. At the **Advanced Properties**, select **Use preshared key for authentication**. In the field **key type: IHU_VPN_2016** and click **OK**.



Connection to VPN

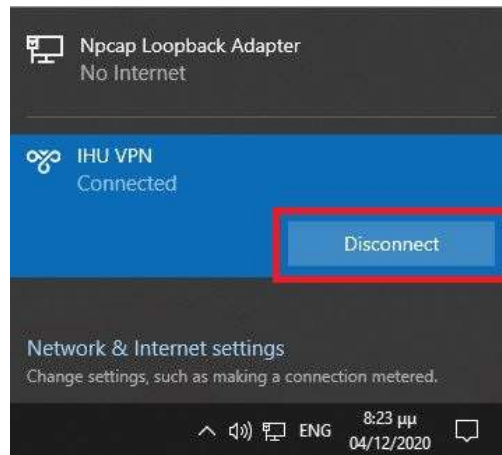
1. To connect to the VPN, click on the network icon at the bottom right corner of your screen (taskbar). Click on **IHU VPN** and then **Connect**.



2. The first time that you connect after VPN setup, you will be asked to enter your VPN account credentials (username, password).
The VPN account is different than the uregister account, but their username is the same. To set up your VPN password, visit the following page: https://support.ihu.edu.gr/reset_password/
3. As soon as the connection is established, you will see the word **Connected** appear below **IHU VPN**.



4. When you finish your work, do not forget to disconnect from the VPN



Note: An alternative means to connect to the VPN in Windows 10 is from Windows Settings > Network and Internet > VPN

